

Online Workshop on Forest Certification for Goa Forest Department

20th August 2020

NCCF Forest Management Certification Scheme. *(PEFC endorsed)*

By:

Avani K Varma
(ex PCCF & HoFF, Karnataka)
Chairperson, NCCF FM Standard Development
Group



Our Forests/ToF

- ✓ Globally, India stands at 10th position accounting for **2% of Total Forest Cover** of the world
- ✓ As per India State of Forest Report 2019:
 - Forest Cover = 71.22 mha (21.67%)
 - Tree Cover = 9.50 mha (2.89%)**Forest & Tree Cover = 80.72 Mha (24.56% of GA)**

- ✓ **Protected Areas Network;**
868 PAs spread over 16.5 Mha (5.02 % of GA)

Goa:

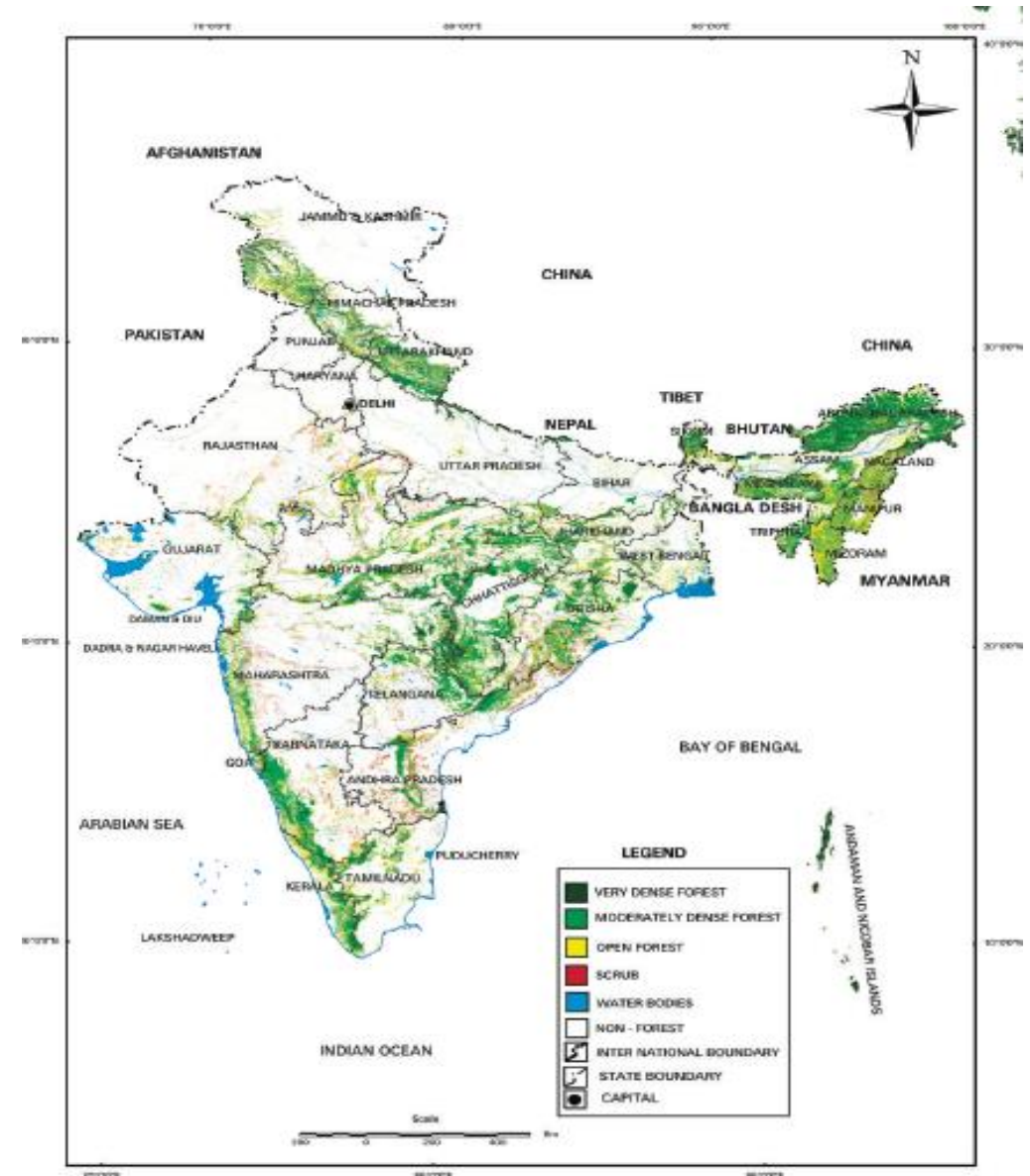
Forest cover: 2,237.49 sq.km (60.44% of GA)

Tree cover: *Tree cover = 272 sq.km*

Extent of ToF = 1,335 sq.km (forest cover outside RFA + Tree cover)

Forest & Tree Cover; Mha (.....% of GA)

PAs;Sq km (5.33% of GA); 1 NP and 6 sanctuaries.

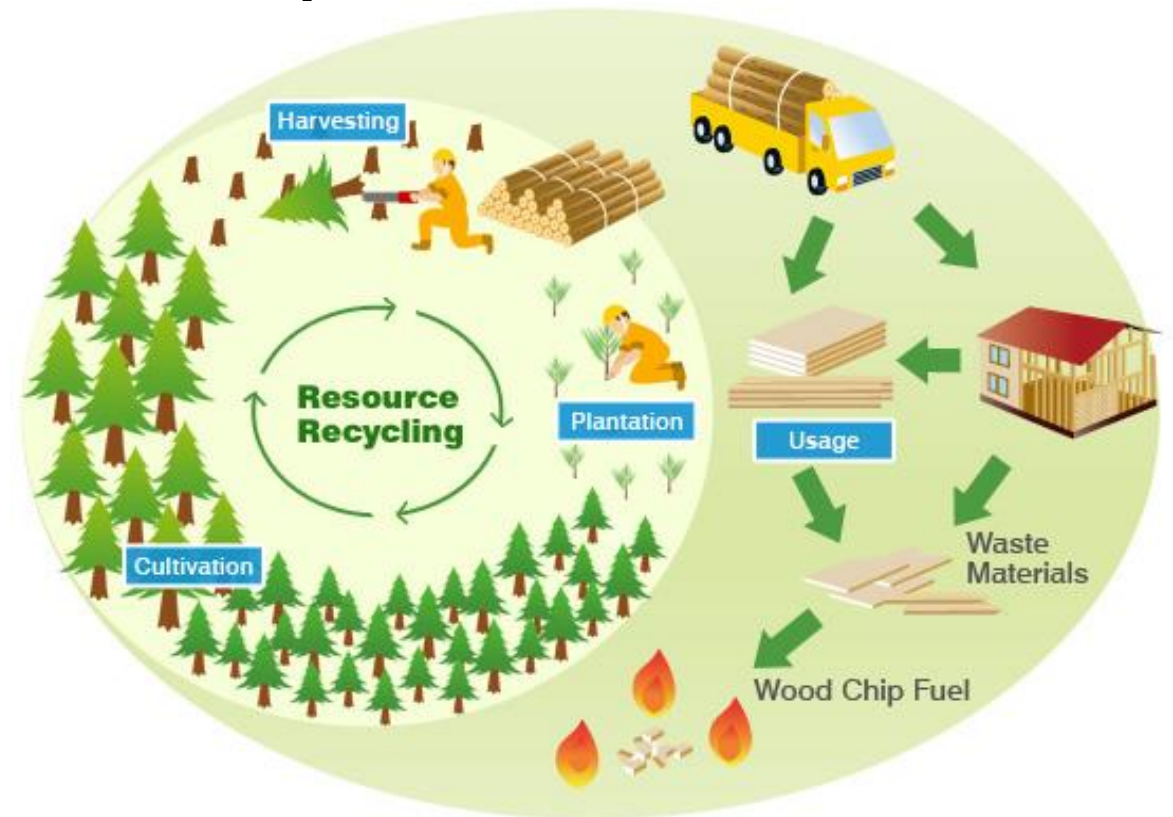


Sustainable Forest Management (SFM)

SFM: management of forests on principles of Sustainable Development; balancing environmental, economic and social aspects

Elements of SFM (as per Non-legally binding Instruments of FAO)

1. Extent of forest resources
2. Biological Diversity
3. Forest health and vitality
4. Productive functions of forest resources
5. Protective functions of forest resources
6. Socio-economic functions of forest resources
7. Legal, institutional and policy framework



“National Working Plan Code 2014” promotes sustainable management of forests and biodiversity

SFM and India's International Commitments

- ✓ **Sustainable Development Goals:** Strengthen the positive contributions that forests play in achieving SDGs, particularly no poverty, zero hunger, climate action, life on land and combating desertification
- ✓ **Article 5 of Paris Agreement** recognizes REDD+ as a fundamental element, for tackling climate change as well as to conserve and enhance Biological Carbon Reservoir of forests and other ecosystems
- ✓ **Nationally Determined Contribution** additional 2.5 - 3 billion tons of CO₂eq. by 2030 through additional forest and tree cover
- ✓ **Bonn Challenge** restoring 21 mha of degraded and deforested land by 2030 (this was enhanced to 26 mha by Hon'ble Prime Minister during COP14 of UNCCD held at New Delhi in 2019)

Certification supports:

- sustainable development and SFM
- economic growth
- trade
- livelihoods
- value chains
- consumer protection

While enhancing;

- competitiveness
- fostering technological development
- meeting the requirements of health, safety, and environmental conservation.

Components of a Credible Certification System

A credible certification system has **three distinct functions**, performed by independent organizations

Standard Setting: [Scheme – FSC, NCCF-PEFC]

Multi-stakeholder process –
defining certification requirements (P C I v)

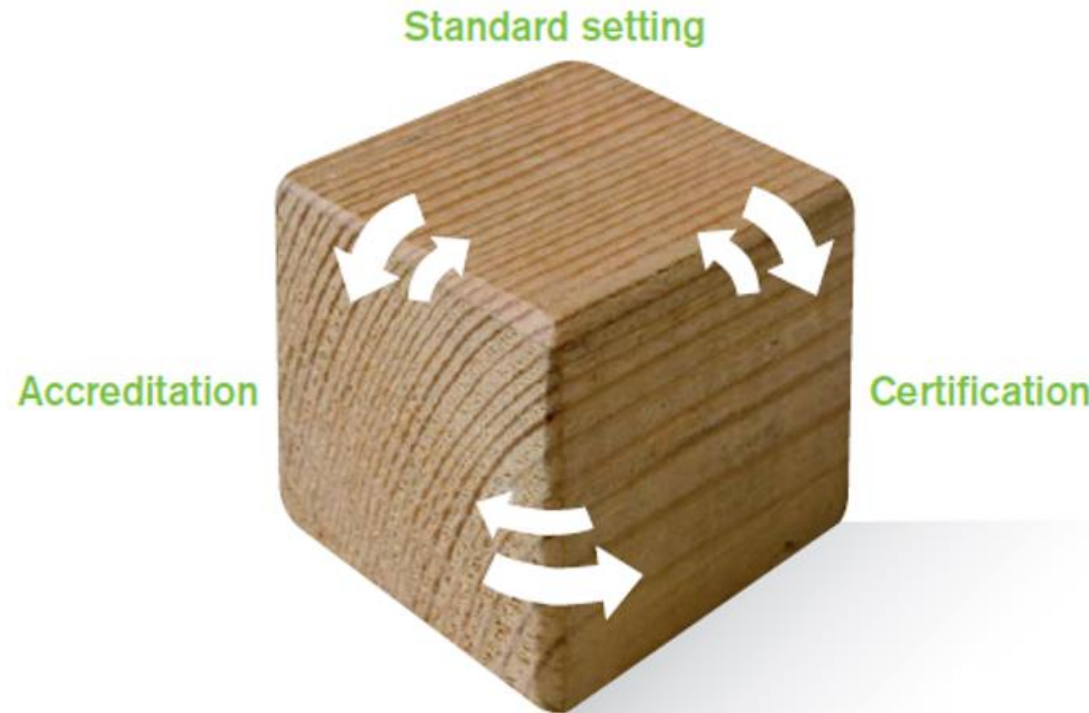
Certification:

Checking fulfilling “standard” requirements;
by Certification Bodies

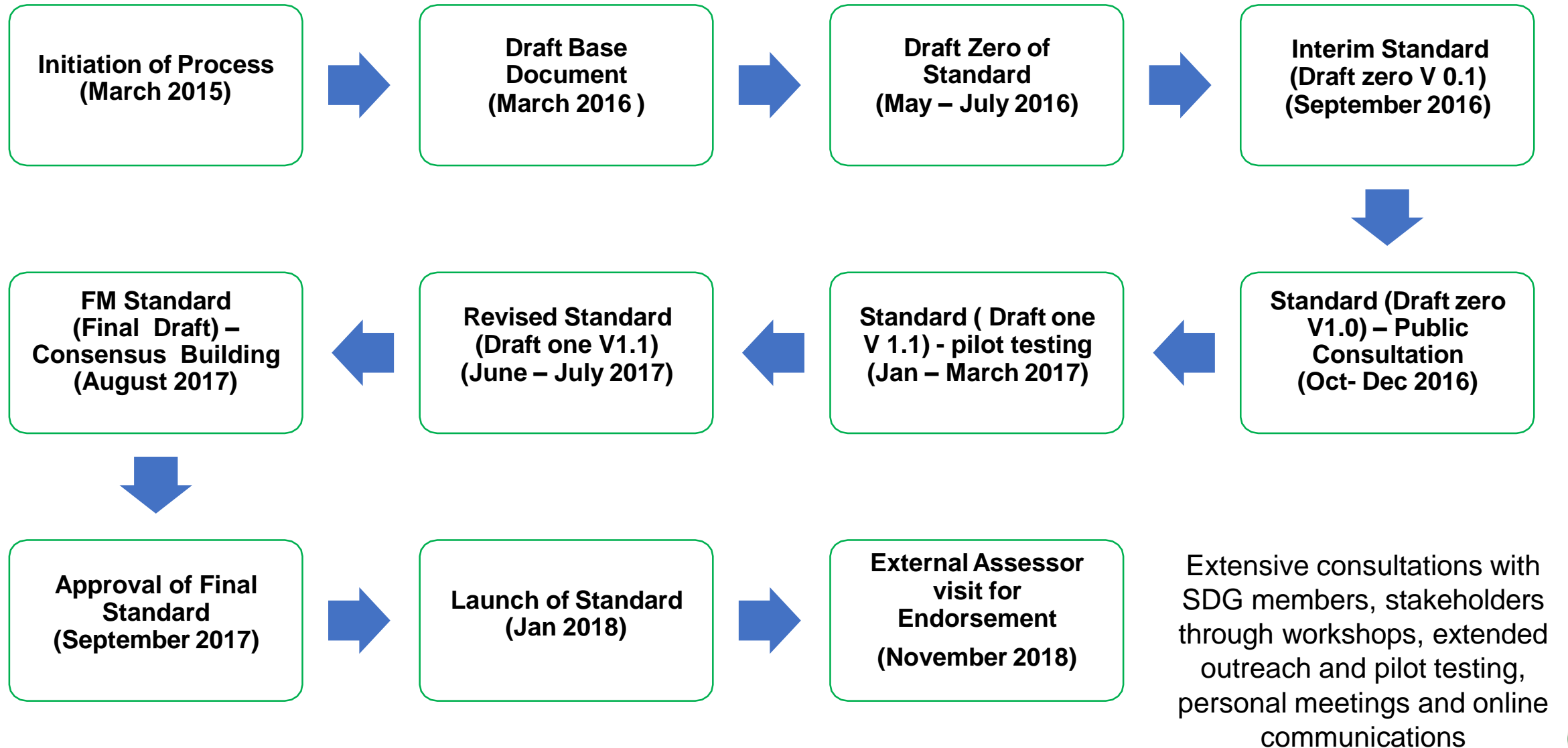
Accreditation:

Assessing the competence of CBs;
by an independent Accreditation Body

[For India: National Accreditation Board for Certification Bodies]



Standard Setting Process of NCCF-PEFC-FM Certification Standard



NCCF-PEFC FM Standard

Theme	Description
Theme A	Legality and Land Tenure
Theme B	Written Forest Management Plan and its implementation and periodic review
Theme C	Impact of forest management activities in the social, economic and environmental spheres.
Theme D	Economic viability of forest management operations
Theme E	Socially responsible forest management, social and community rights and relations
Theme F	Ecological integrity and health of forests– conservation and management

Themes: 6

Principles: 14

Criteria: 59

Indicators: 239

NCCF FM Standard Incorporates

- ✓ Full conformance with all **applicable laws and regulations**
- ✓ Conformance with ratified **ILO Conventions**
- ✓ No use of **WHO banned pesticides**
- ✓ Respect, and upholding of **workers' rights and wages**
- ✓ **Health and safety** issues
- ✓ Clear **demarcation of land boundaries and maps**
- ✓ Regular **trainings** of staff and workers
- ✓ **Stakeholder engagement** in forest management operations
- ✓ **Continuous improvement** in management
- ✓ Unbiased **independent 3rd Party monitoring** and reporting to enable improvement
- ✓ Assessment of **environmental impacts** to plan remedial measures
- ✓ **Mitigation** of negative impacts on environment and society
- ✓ Adherence to **social and environmental safeguards**
- ✓ **Traceability and tracking** measures to verify source of product; eliminates illegal sourcing

Synergy between NCCF-FM Certification Standard & National Working Plan Code 2014

NCCF FM Standard incorporates all aspects and components of WP in Principles, Criteria and Indicators

Additionally it provides for:

- ✓ Brand Image : Global recognition
- ✓ Periodic monitoring, evaluation and assessment by Independent third party
- ✓ Compliance to internationally benchmarked forest management practices
- ✓ Compliance to International Laws, Treaties and Agreements
- ✓ Ensures active engagement of Stakeholders in planning, implementation monitoring and evaluation
- ✓ Incorporates components of welfare, health and safety of people, labour and staff
- ✓ Added thrust on forest hydrology, biodiversity conservation and climate change mitigation
- ✓ Value addition, exploring new products and markets

NCCF FM Standard Incorporates

- ✓ Practicing sustainable forestry: needs for present and future generations
- ✓ **Health and productivity** of forests
- ✓ **Forest regeneration** after harvest
- ✓ Protecting forests from damaging agents (such as wildfire, diseases and invasive species)
- ✓ **Protecting water bodies, riparian areas**
- ✓ Maintaining **water quality**
- ✓ Protection and promote **biological diversity**
- ✓ Preserving **ecologically, geologically or culturally** important lands
- ✓ Spreading **awareness** of sustainable forestry practices
- ✓ **Providing ecosystem services**
- ✓ Involving **forests dependent communities**
- ✓ Recognizing, respecting **rights & traditions** of indigenous and tribal people
- ✓ Supporting advances in SFM through **scientific research**
- ✓ **Value addition** and exploring new products and markets
- ✓ **Documenting** audits and publishing the findings

Advantages of a Domestic Scheme

- ✓ **International Standards** are of **Generic Nature**
- ✓ **International Standards** may imply higher costs (auditing, travel, logistics, etc.)

Indian Conditions:

- ✓ diverse **legal** and **administrative** frameworks of forest management
- ✓ diverse **social, cultural & geographical** conditions of forests in different States
- ✓ **diversity of forest types** and **variability** of FM in India

Advantages of Domestic Scheme

- ✓ Driven by **national stakeholders**
- ✓ **Promote** and **facilitate** national and international **trade**
- ✓ Integration of **local needs** and expectations
- ✓ Pilot Tested in Indian Conditions
- ✓ **Economical** (e.g. domestic auditors, ease and flexibility in use)

References: NCCF FM Certification Standard

- ✓ Guidelines of United Nations Forum on Forests : Implementing Non Legally Binding Instruments on Forests in India
- ✓ Bhopal India Process : Criteria and Indicators (IIFM)
- ✓ National Working Plan Code 2014 (NCCF-FM Certification Standard has synergy with it)
- ✓ National Forest Policy 1988
- ✓ Indian Laws and acts such as Scheduled Tribes and Other Traditional Forest Dwellers (Recognition of Forest Rights) Act 2006, Biological Diversity Act 2002, National Forest Policy 1988, Forest Conservation Act 1980, Wildlife Protection Act 1972, Indian Forest Act 1927 and many more
- ✓ PEFC Sustainable Forest Management – Requirements PEFC – ST 1003:2010
- ✓ MTCC Criteria & Indicators for Forest Management Certifications
- ✓ SFI Sustainability Forest Management Standard
- ✓ FSC International Generic Indicators FSC-STD-60-004 V1-0 EN
- ✓ ITTO Principles and Guidelines for the Sustainable Forest Management of Natural Tropical Forests
- ✓ NCCF's Standard Setting Policy
- ✓ ILO's Declaration of Fundamental Principles and Rights at Work 1998
- ✓ WWF High Conservation Value Toolkit Edition 1 (December 2003)

Thank You!!

Network for Certification and Conservation of Forests

Contact:

Mr Avani K Varma

Email: avivarma@yahoo.com

Email: info@nccf.in